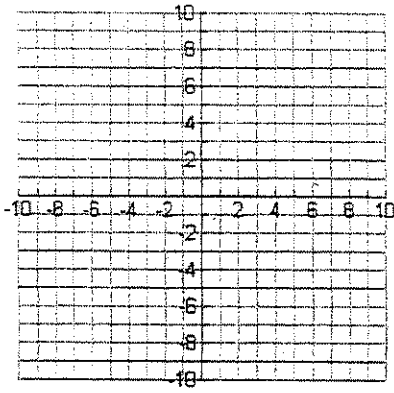
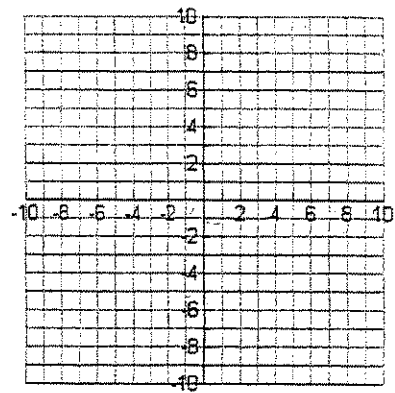


Graph the following conditions

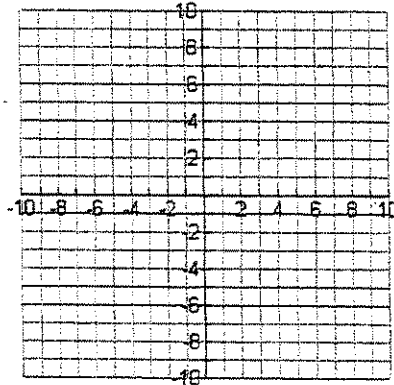
Name _____



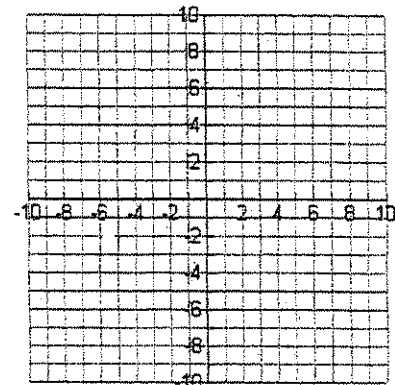
① $y = x$



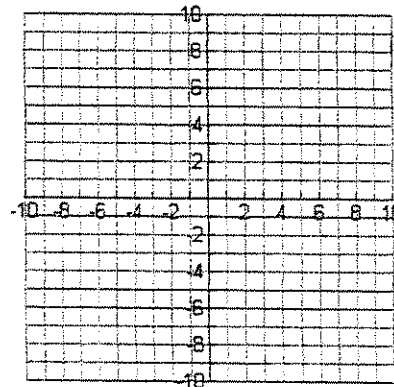
⑤ $x = 3$



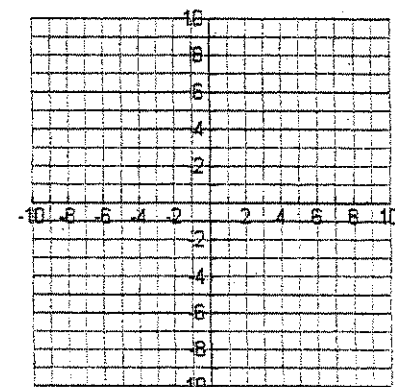
② $y = 3$



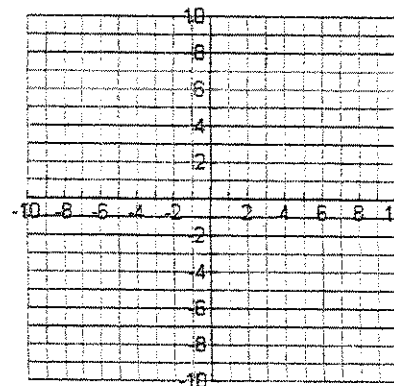
⑥ $y = -x$



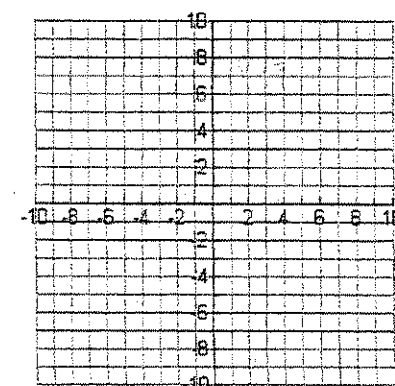
③ $y = 0$



⑦ $y = -2$



④ $x = 0$



⑧ $x = -4$

11 – 14 Set up the unknowns
Set up the equation and solve
Answer the question

11. Two angles are complementary. One of them is six more than three times the other. Find the angles.

12. Two angles are supplementary. One of them is twelve less than five times the other. Find the angles.

13. Two angles form a linear pair. They are in a 12:3 ratio. Find the angles

14. In a triangle, one angle is five times another, while the third angle is forty five more than three times the smallest angle. Find the angles.